



## Table of Contents

04

New Hire

05

Residential and Light Commercial

07

Commercial Construction

09

OEM

11

Industrial

15

Engineering Services and Systems

17

Courses by Date



Powering Business Worldwide

## How to Use This Guide

### Phase

Phasing is the order in which the courses should be taken in a particular market segment. There is not a specific time frame for a given phase; the progression should be at the learner's pace and according to one's schedule and availability.

### Tiers

Learning opportunities from Eaton are organized by market segment and the progression is outlined in tiers. Tier level describes the levels of course complexity.

Tier 1 - introduction / what, where, how, and why

Tier 2 - intermediate / feature, function, benefit - develop basic quotes

Tier 3 - advanced / competitive information, specialty products, applications, aligning value

Tier 4 - expert / advanced technical information, value engineering, demand creation, selling Eaton solutions

### Who

These courses are designed for, and available to, Eaton licensed channel partners. NAS, licensed sales representative, and other Eaton employees are welcome to register and join us at any of these events.

### Registration

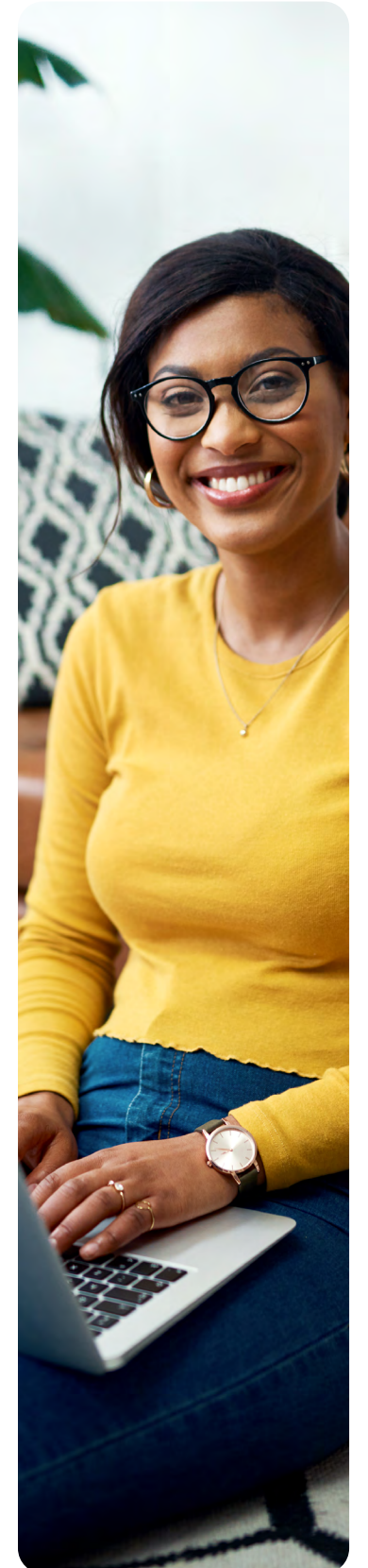
Learners can register for courses in Eaton University which is accessed through JOE by employees and My.Eaton by distributors. Enter the desired course code in the search field to view available sessions. If you have JOE open while viewing this document, then you can click on the enroll button to be taken directly to the registration page.

### Help

If you need assistance, additional details, or wish to provide feedback and ideas, contact us at: [eetraining@eaton.com](mailto:eetraining@eaton.com)

## New Hire Training Plan

Title and Description	Format	Course Code
101 Basics Series: Fundamentals of Circuit Breakers <a href="#">Enroll</a>	Online	EDULA101S01
101 Basics Series: Fundamentals of Electrical Distribution <a href="#">Enroll</a>	Online	EDULA101S02
101 Basics Series: Fundamentals of Fuses <a href="#">Enroll</a>	Online	EDULA101S30
101 Basics Series: Fundamentals of Motors <a href="#">Enroll</a>	Online	EDULA101S20
Bid Manager Lesson 2: Intermediate Bid Manager <a href="#">Enroll</a>	Online	EUBMITBM2
Fundamentals of Electricity <a href="#">Enroll</a>	Curriculum	EDULAFUND
Introduction to Bid Manager <a href="#">Enroll</a>	Online	EUBMITBM1
Vistaline on the Web (VOTW) <a href="#">Enroll</a>	Online	EGITAV0100WU1



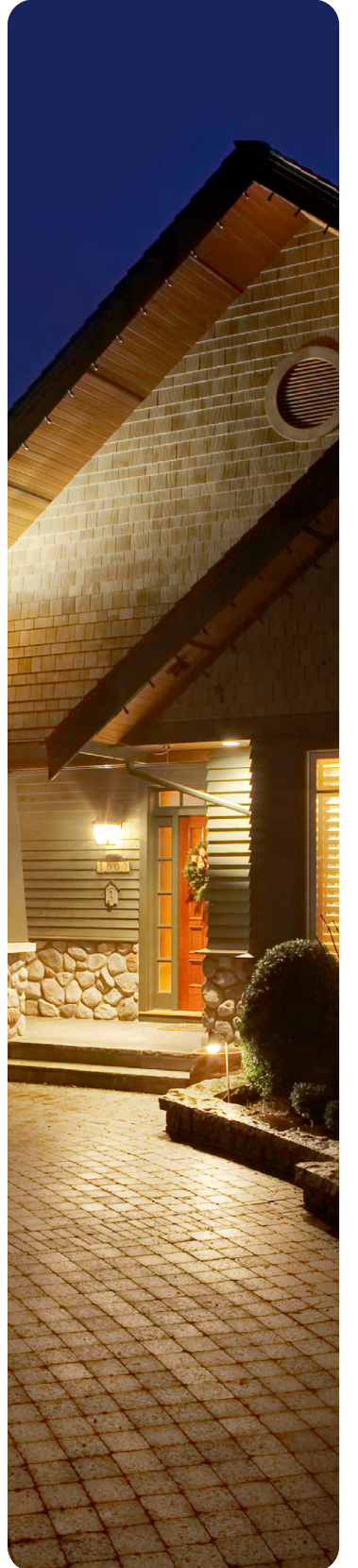
# Residential and Light Commercial Training Plan

Title and Description	Format	Course Code
<b>Phase 1</b>		
<a href="#">101 Basics Series: Loadcenters</a>	Online	EDULA101S14
<a href="#">101 Basics Series: Low Voltage Circuit Protection</a>	Online	EDULA101S10
<a href="#">101 Basics Series: Metering</a>	Online	EDULA101S12
<a href="#">101 Basics Series: Surge Protective Devices</a>	Online	EDULA101S17
<a href="#">101 Basics Series: Wiring Devices</a>	Online	EDULA101S18
<a href="#">201 Series: Residential Metering</a>	Online	EDULD201S35
<a href="#">Arc Fault Circuit Interrupters, Loadcenters and Bid Manager Configuration Exercises</a>	Virtual Instructor	EDUWDVRLCT2
<a href="#">Commercial and Residential One-Line Reading</a>	Virtual Instructor	EDUWDVCROLR
<a href="#">Distributor Focused Workshop - Residential Products</a>	Live Instructor	EDUDFWR
<a href="#">EESS: Arc Flash and the Importance of Electrical Safety</a>	Online	EDULDEESS10
<a href="#">Residential Group Metering and Bid Manager Configuration Exercises</a>	Virtual Instructor	EDUWDVRMTRT2
<a href="#">Residential Product Workshop Tier 2</a>	Live Instructor	EDUERRPWT2
<b>Phase 2</b>		
<a href="#">101 Basics Series: Low Voltage Distribution Equipment</a>	Online	EDULA101S24
<a href="#">101 Basics Series: Safety Switches and Disconnects</a>	Online	EDULA101S16
<a href="#">101 Basics Series: Transformers</a>	Online	EDULA101S13
<a href="#">Bid Manager Configuration Exercises for Multi-Family Applications</a>	Virtual Instructor	EDUWDVVBMT2
<a href="#">Distributor Focused Workshop - Construction Products</a>	Live Instructor	EDUDFWC
<a href="#">Dry-Type Distribution Transformer (DTDT) Bidmanager Take Off Training</a>	Virtual Instructor	EDUWDVDTXT2
<a href="#">Electronic Distributor Focused Workshop - Residential Products</a>	Virtual Instructor	EDUWDVFWR
<a href="#">Panelboard Bid Manager Configuration</a>	Virtual Instructor	EDUWDVPLNT2
<a href="#">Safety Switch Bid Manager Take Off Training</a>	Virtual Instructor	EDUWDVSSTT2
<b>Phase 3</b>		
<a href="#">101 Basics Series: Busway</a>	Online	EDULA101S18
<a href="#">201 Series: Eaton Switchboards</a>	Online	EDULD201S37
<a href="#">Busway Bid Manager Takeoff</a>	Virtual Instructor	EDUWDVBUST2
<a href="#">Electronic Distributor Focused Workshop - Commercial Products</a>	Virtual Instructor	EDUWDVFWC



# Residential and Light Commercial Training Plan

Title and Description	Format	Course Code
<b>Phase 3 Continued</b>		
<a href="#">Light Commercial and Residential Project Configuration</a>	Live Instructor	EDUDCRPCT3
<a href="#">Switchboard Bid Manager Takeoff</a>	Virtual Instructor	EDUWDVSBTT2
<b>Phase 4</b>		
<a href="#">101 Basics Series: Low Voltage Motor Control</a>	Online	EDULA101S04
<a href="#">101 Basics Series: Packaged Control Solutions</a>	Online	EDULA101S21
<a href="#">101 Basics Series: Transfer Switches</a>	Online	EDULA101S15
<a href="#">Automatic Transfer Switch Bid Manager Take off</a>	Virtual Instructor	EDUWDVATST2
<a href="#">Basic Schematics and Motor Control Diagrams</a>	Virtual Instructor	EDUWDVBMCDT2
<a href="#">Busway Tier 2</a>	Live Instructor	EDUDCBUST2
<a href="#">Enclosed Control Bid Manager Takeoff</a>	Virtual Instructor	EDUWDVECNT2
<a href="#">Switchboards Tier 2</a>	Live Instructor	EDUDSADT2
<a href="#">Switching Devices Workshop Tier 3</a>	Live Instructor	EDUDSDT3
<b>Phase 5</b>		
<a href="#">Automatic Transfer Switches Tier 2</a>	Live Instructor	EDUDATST2
<a href="#">Busway Tier 3 Training</a>	Live Instructor	EDUAPBUST3
<a href="#">Commercial Construction Workshop Tier 3</a>	Live Instructor	EDUDCCCW3
<a href="#">Design Build Workshop Tier 4</a>	Live Instructor	EDUECDB12
<a href="#">EESS: Power Systems Engineering</a>	Online	EDULDEESS07
<a href="#">Electronic Distributor Focused Workshop - Industrial Control Products</a>	Virtual Instructor	EDUWDVFWI
<a href="#">Electronic Metering Monitoring and Communications</a>	Live Instructor	EDUDEMCT2
<a href="#">Motor Control Centers Tier 2</a>	Live Instructor	EDUDPMCCT2



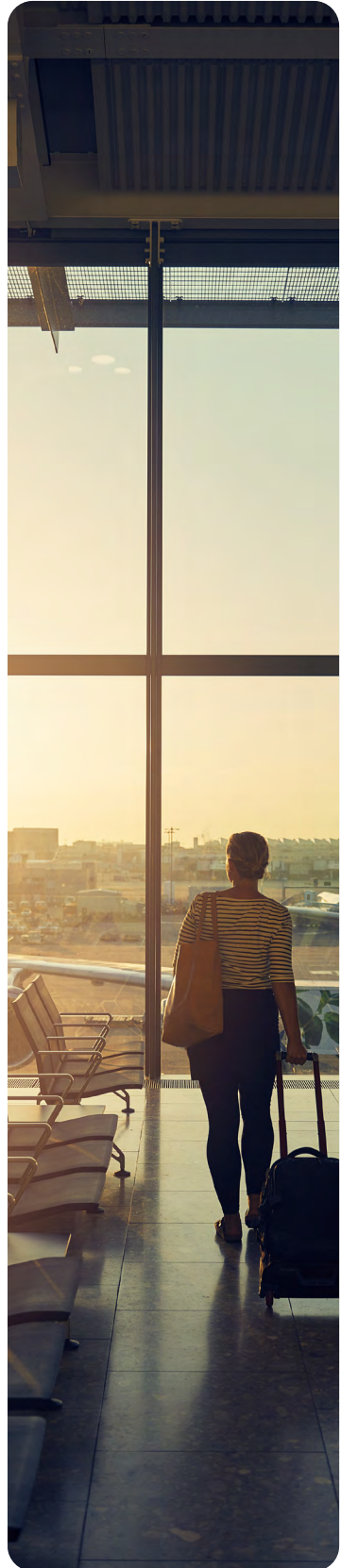
# Commercial Construction Training Plan

Title and Description	Format	Course Code
<b>Phase 1</b>		
<a href="#">101 Basics Series: Busway</a>	Online	EDULA101S18
<a href="#">101 Basics Series: Low Voltage Circuit Protection</a>	Online	EDULA101S10
<a href="#">101 Basics Series: Low Voltage Distribution Equipment</a>	Online	EDULA101S24
<a href="#">101 Basics Series: Low Voltage Motor Control</a>	Online	EDULA101S04
<a href="#">101 Basics Series: Safety Switches and Disconnects</a>	Online	EDULA101S16
<a href="#">101 Basics Series: Surge Protective Devices</a>	Online	EDULA101S17
<a href="#">101 Basics Series: Transformers</a>	Online	EDULA101S13
<a href="#">201 Series: Residential Metering</a>	Online	EDULD201S35
<a href="#">Commercial and Residential One-Line Reading</a>	Virtual Instructor	EDUWDVCRCLR
<a href="#">Distributor Focused Workshop - Construction Products</a>	Live Instructor	EDUDFWC
<a href="#">Distributor Focused Workshop - Residential Products</a>	Live Instructor	EDUDFWR
<a href="#">Dry-Type Distribution Transformer (DTDT) Bidmanager Take Off Training</a>	Virtual Instructor	EDUWDVDTXT2
<a href="#">Panelboard Bid Manager Configuration</a>	Virtual Instructor	EDUWDVPLT2
<a href="#">Power Defense Molded Case Circuit Breakers</a>	Online	EDUVPD01
<a href="#">Safety Switch Bid Manager Take Off Training</a>	Virtual Instructor	EDUWDVSSTT2
<a href="#">101 Basics Series: Loadcenters</a>	Online	EDULA101S14
<b>Phase 2</b>		
<a href="#">101 Basics Series: Metering</a>	Online	EDULA101S12
<a href="#">101 Basics Series: Packaged Control Solutions</a>	Online	EDULA101S21
<a href="#">101 Basics Series: Transfer Switches</a>	Online	EDULA101S15
<a href="#">EESS: Arc Flash and the Importance of Electrical Safety</a>	Online	EDULDEESS10
<a href="#">201 Series: Eaton Switchboards</a>	Online	EDULD201S37
<a href="#">201 Series: Low Voltage Fuses</a>	Online	EDULD201S39
<a href="#">Electronic Distributor Focused Workshop - Commercial Products</a>	Virtual Instructor	EDUWDVFWC
<a href="#">Light Commercial and Residential Project Configuration</a>	Live Instructor	EDUDCRPCT3
<a href="#">Switchboard Bid Manager Takeoff</a>	Virtual Instructor	EDUWDVSBTT2
<a href="#">Switchboards Tier 2</a>	Live Instructor	EDUDSADT2



# Commercial Construction Training Plan

Title and Description	Format	Course Code
<b>Phase 3</b>		
<a href="#">101 Basics Series: Communication Networks</a>	Online	EDULA101S08
<a href="#">101 Basics Series: Medium Voltage Distribution Equipment</a>	Online	EDULA101S23
<a href="#">101 Basics Series: Medium Voltage Power Circuit Protection</a>	Online	EDULA101S09
<a href="#">Automatic Transfer Switch Bid Manager Take off</a>	Virtual Instructor	EDUWDVATST2
<a href="#">Basic Schematics and Motor Control Diagrams</a>	Virtual Instructor	EDUWDVBMCDT2
<a href="#">Busway Bid Manager Takeoff</a>	Virtual Instructor	EDUWDVBUST2
<a href="#">Busway Tier 2</a>	Live Instructor	EDUDCBUST2
<a href="#">EESS: Power Systems Engineering</a>	Online	EDULDEESS07
<a href="#">Enclosed Control Bid Manager Takeoff</a>	Virtual Instructor	EDUWDVECNT2
<a href="#">Switching Devices Workshop Tier 3</a>	Live Instructor	EDUDSDT3
<a href="#">Distributor Focused Workshop - Industrial Products</a>	Live Instructor	EDUDFWI
<b>Phase 4</b>		
<a href="#">201 Series: Soft Starters</a>	Online	EDULD201S36
<a href="#">Commercial Construction Workshop Tier 3</a>	Live Instructor	EDUDCCWT3
<a href="#">Communicating Panelboards and Switchboards Tier 3</a>	Virtual Instructor	EDUWDVPST3
<a href="#">Electronic Distributor Focused Workshop - Industrial Control Products</a>	Virtual Instructor	EDUWDVFWI
<a href="#">Switchgear for Distributors</a>	Live Instructor	EDUDSWGRT2
<a href="#">Switchgear One-Line Reading</a>	Virtual Instructor	EDUWDVBSWGRDT2
<a href="#">Automatic Transfer Switches Tier 2</a>	Live Instructor	EDUDATST2
<a href="#">Motor Control Centers Tier 2</a>	Live Instructor	EDUDPMCCT2
<b>Phase 5</b>		
<a href="#">Electronic Metering, Monitoring and Communications Tier 2</a>	Live Instructor	EDUDEMCT2
<a href="#">Busway Tier 3 Training</a>	Live Instructor	EDUAPBUST3
<a href="#">EESS: Switchgear Modernization</a>	Online	EDULDEESS02
<a href="#">Advanced Schematics and Motor Control Diagrams Training</a>	Virtual Instructor	EDUWDVAMCDT3
<a href="#">Power Quality Solutions Tier 3</a>	Live Instructor	EDUDQPST3



# OEM Training Plan

Title and Description	Format	Course Code
<b>Phase 1</b>		
<a href="#">101 Basics Series: Low Voltage Circuit Protection</a>	Online	EDULA101S10
<a href="#">101 Basics Series: Low Voltage Motor Control</a>	Online	EDULA101S04
<a href="#">101 Basics Series: Packaged Control Solutions</a>	Online	EDULA101S21
<a href="#">101 Basics Series: Pilot Devices</a>	Online	EDULA101S06
<a href="#">101 Basics Series: Safety Switches and Disconnects</a>	Online	EDULA101S16
<a href="#">101 Basics Series: Surge Protective Devices</a>	Online	EDULA101S17
<a href="#">101 Basics Series: Transformers</a>	Online	EDULA101S13
<a href="#">201 Series: Low Voltage Fuses</a>	Online	EDULD201S39
<a href="#">Basic Schematics and Motor Control Diagrams</a>	Virtual Instructor	EDUWDVBMCDT2
<a href="#">Enclosed Control Bid Manager Takeoff</a>	Virtual Instructor	EDUWDVECNT2
<a href="#">Industrial Control Workshop Tier 2</a>	Live Instructor	EDUEIC2
<a href="#">Introduction to Motor Control</a>	Video	EDUVA03014
<a href="#">Overload Relays</a>	Video	EDUVD02914
<a href="#">Power Defense Molded Case Circuit Breakers</a>	Online	EDUVAPD01
<a href="#">Safety Switch Bid Manager Take Off Training</a>	Virtual Instructor	EDUWDVSSTT2
<a href="#">101 Basics Series: Transformers</a>	Online	EDULA101S13
<b>Phase 2</b>		
<a href="#">101 Basics Series: Communication Networks</a>	Online	EDULA101S08
<a href="#">101 Basics Series: Operator Interface</a>	Online	EDULA101S22
<a href="#">101 Basics Series: Programmable Logic Controllers</a>	Online	EDULA101S05
<a href="#">101 Basics Series: Relays and Timers</a>	Online	EDULA101S11
<a href="#">101 Basics Series: Sensors and Limit Switches</a>	Online	EDULA101S07
<a href="#">201 Series: Soft Starters</a>	Online	EDULD201S36
<a href="#">Advanced Schematics and Motor Control Diagrams Training</a>	Virtual Instructor	EDUWDVAMCDT3
<a href="#">Electronic Distributor Focused Workshop - Industrial Control Products</a>	Virtual Instructor	EDUWDVFWI
<a href="#">Introduction to Automation Concepts</a>	Virtual Instructor	EDUWDVAUTOT2
<a href="#">201 Series: Wiring Devices - Industrial</a>	Online	EDULD201S40
<a href="#">Motor Control Centers Tier 2</a>	Live Instructor	EDUDPMCCT2
<a href="#">Switching Devices Workshop Tier 3</a>	Live Instructor	EDUSDT3
<a href="#">Variable Frequency Drives Tier 2</a>	Live Instructor	EDUDIVFDT2



# OEM Training Plan

Title and Description	Format	Course Code
<b>Phase 3</b>		
<a href="#">Automation Tier 3</a>	Live Instructor	EDUDIAUTOT3
<a href="#">Electronic Metering, Monitoring and Communications Tier 2</a>	Live Instructor	EDUDEMMCT2
<a href="#">Industrial Communication Protocols</a>	Virtual Instructor	EDUWDVICPT3
<a href="#">Variable Frequency Drives Tier 3</a>	Live Instructor	EDUDIVFDT3
<a href="#">Motor Control Centers Tier 3</a>	Live Instructor	EDUDPMCCT3



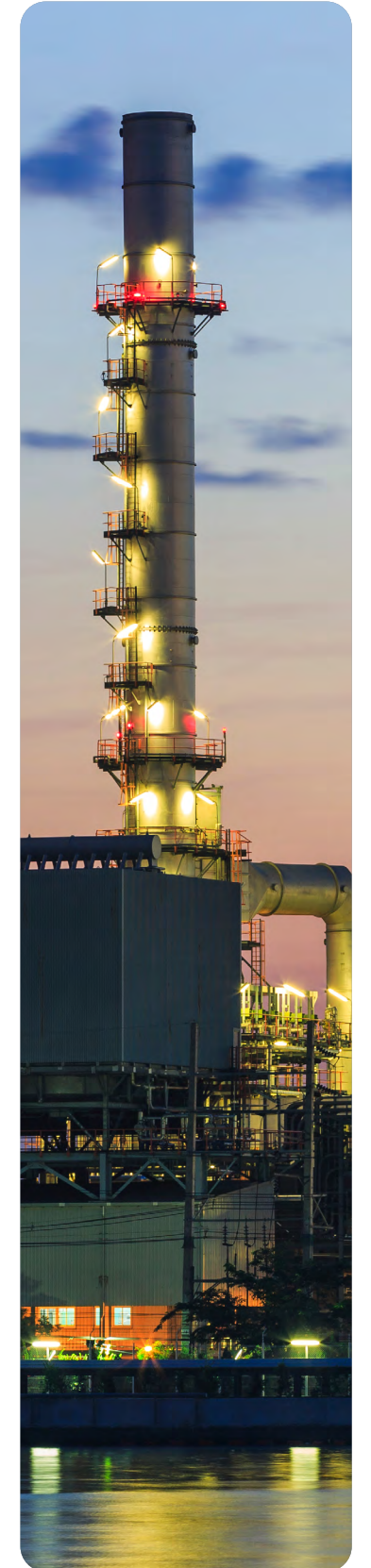
# Industrial Training Plan

Title and Description	Format	Course Code
<b>Phase 1</b>		
101 Basics Series: Busway <a href="#">Enroll</a>	Online	EDULA101S18
101 Basics Series: Communication Networks <a href="#">Enroll</a>	Online	EDULA101S08
101 Basics Series: Low Voltage Circuit Protection <a href="#">Enroll</a>	Online	EDULA101S10
101 Basics Series: Low Voltage Distribution Equipment <a href="#">Enroll</a>	Online	EDULA101S24
101 Basics Series: Low Voltage Motor Control <a href="#">Enroll</a>	Online	EDULA101S04
101 Basics Series: Medium Voltage Distribution Equipment <a href="#">Enroll</a>	Online	EDULA101S23
101 Basics Series: Medium Voltage Power Circuit Protection <a href="#">Enroll</a>	Online	EDULA101S09
101 Basics Series: Metering <a href="#">Enroll</a>	Online	EDULA101S12
101 Basics Series: Operator Interface <a href="#">Enroll</a>	Online	EDULA101S22
101 Basics Series: Packaged Control Solutions <a href="#">Enroll</a>	Online	EDULA101S21
101 Basics Series: Programmable Logic Controllers <a href="#">Enroll</a>	Online	EDULA101S05
101 Basics Series: Protective Relays <a href="#">Enroll</a>	Online	EDULA101S28
101 Basics Series: Surge Protective Devices <a href="#">Enroll</a>	Online	EDULA101S17
101 Basics Series: Safety Switches and Disconnects <a href="#">Enroll</a>	Online	EDULA101S16
101 Basics Series: Transformers <a href="#">Enroll</a>	Online	EDULA101S13
101 Basics Series: Transfer Switches <a href="#">Enroll</a>	Online	EDULA101S15
201 Series: Eaton Switchboards <a href="#">Enroll</a>	Online	EDULD201S37
Basic Schematics and Motor Control Diagrams <a href="#">Enroll</a>	Virtual Instructor	EDUWDVBMCDT2
Distributor Focused Workshop - Construction Products <a href="#">Enroll</a>	Live Instructor	EDUDFWC
Distributor Focused Workshop - Industrial Products <a href="#">Enroll</a>	Live Instructor	EDUDFWI
EESS: Power Systems Engineering <a href="#">Enroll</a>	Online	EDULDEESS07
Enclosed Control Bid Manager Takeoff <a href="#">Enroll</a>	Virtual Instructor	EDUWDVECNT2
Introduction to Motor Control <a href="#">Enroll</a>	Online	EDVA03014
Low Voltage Switchgear Tier 2 <a href="#">Enroll</a>	Live Instructor	EDUEPLVAT2
Motor Control Centers Tier 2 <a href="#">Enroll</a>	Live Instructor	EDUDPMCCT2
Panelboard Bid Manager Configuration <a href="#">Enroll</a>	Virtual Instructor	EDUWDVPLNT2
Power Defense Molded Case Circuit Breakers <a href="#">Enroll</a>	Online	EDUVAPD01
Safety Switch Bid Manager Take Off Training <a href="#">Enroll</a>	Virtual Instructor	EDUWDVSTT2
Switchboard Bid Manager Takeoff <a href="#">Enroll</a>	Virtual Instructor	EDUWDVSBTT2



# Industrial Training Plan

Title and Description	Format	Course Code
<b>Phase 1 Continued</b>		
Switchgear One-Line Reading <a href="#">Enroll</a>	Virtual Instructor	EDUWDVBSWGRDT2
EESS: Power Systems Engineering <a href="#">Enroll</a>	Online	EDULDEESS07
<b>Phase 2</b>		
Advanced Schematics and Motor Control Diagrams Training <a href="#">Enroll</a>	Virtual Instructor	EDUWDVAMCT3
Busway Bid Manager Takeoff <a href="#">Enroll</a>	Virtual Instructor	EDUWDVBUST2
Busway Tier 2 <a href="#">Enroll</a>	Live Instructor	EDUDCBUST2
EESS: Arc Flash and the Importance of Electrical Safety <a href="#">Enroll</a>	Online	EDULDEESS10
EESS: Power Systems Engineering <a href="#">Enroll</a>	Online	EDULDEESS07
Electronic Distributor Focused Workshop - Commercial Products <a href="#">Enroll</a>	Virtual Instructor	EDUWDVFWC
Electronic Distributor Focused Workshop - Industrial Control Products <a href="#">Enroll</a>	Virtual Instructor	EDUWDVFWI
Electronic Metering, Monitoring and Communications Tier 2 <a href="#">Enroll</a>	Live Instructor	EDUEMMCT2
Introduction to Automation Concepts <a href="#">Enroll</a>	Virtual Instructor	EDUWDVAUTOT2
Switchboards Tier 2 <a href="#">Enroll</a>	Live Instructor	EDUDSADT2
Switching Devices Workshop Tier 3 <a href="#">Enroll</a>	Live Instructor	EDUDSDT3
<b>Phase 3</b>		
Busway Tier 3 Training <a href="#">Enroll</a>	Live Instructor	EDUAPBUST3
EESS: Switchgear Modernization <a href="#">Enroll</a>	Online	EDULDEESS02
Industrial Communication Protocols <a href="#">Enroll</a>	Virtual Instructor	EDUWDVICPT3
Power Quality Solutions Tier 3 <a href="#">Enroll</a>	Live Instructor	EDUDQPST3
Switchgear for Distributors <a href="#">Enroll</a>	Live Instructor	EDUDSWGRT2
Variable Frequency Drives Tier 2 <a href="#">Enroll</a>	Live Instructor	EDUDIVFDT2
<b>Phase 4</b>		
EESS: Foreseer Electrical Power Monitoring System <a href="#">Enroll</a>	Online	EDULDEESS05
Motor Control Centers Tier 3 <a href="#">Enroll</a>	Live Instructor	EDUDPMCCT3
Switchgear Modernization Proficiency Training <a href="#">Enroll</a>	Live Instructor	EDUDLEM3T
Automation Tier 3 <a href="#">Enroll</a>	Live Instructor	EDUDIAUTOT3



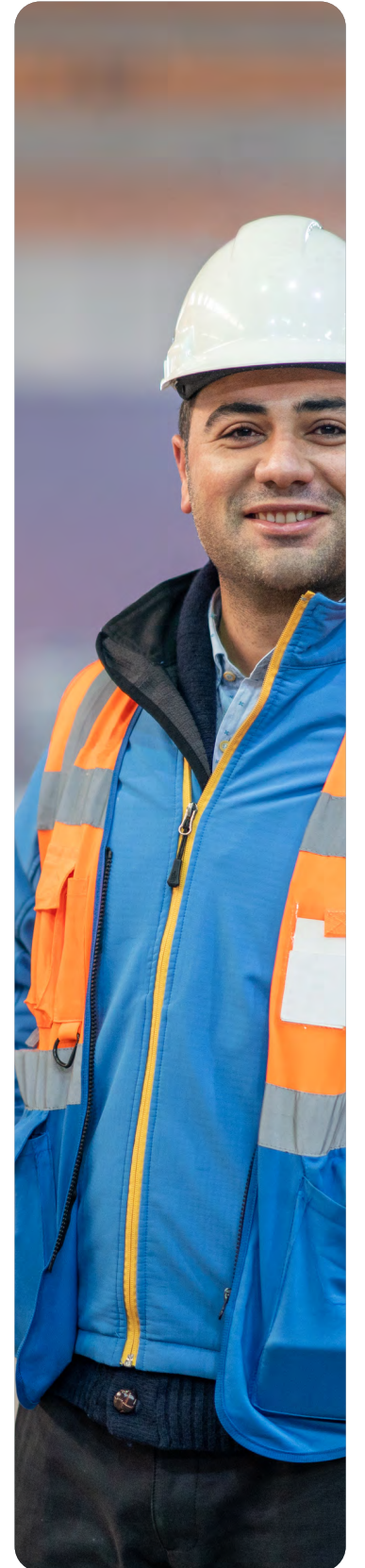
## Engineering Services and Systems Training Plan

Title and Description	Format	Course Code
<b>Phase 1</b>		
101 Basics Series: Busway <a href="#">Enroll</a>	Online	EDULA101S18
101 Basics Series: Communication Networks <a href="#">Enroll</a>	Online	EDULA101S08
101 Basics Series: Low Voltage Circuit Protection <a href="#">Enroll</a>	Online	EDULA101S10
101 Basics Series: Low Voltage Distribution Equipment <a href="#">Enroll</a>	Online	EDULA101S24
101 Basics Series: Low Voltage Motor Control <a href="#">Enroll</a>	Online	EDULA101S04
101 Basics Series: Medium Voltage Distribution Equipment <a href="#">Enroll</a>	Online	EDULA101S23
101 Basics Series: Medium Voltage Power Circuit Protection <a href="#">Enroll</a>	Online	EDULA101S09
101 Basics Series: Programmable Logic Controllers <a href="#">Enroll</a>	Online	EDULA101S05
101 Basics Series: Protective Relays <a href="#">Enroll</a>	Online	EDULA101S28
101 Basics Series: Surge Protective Devices <a href="#">Enroll</a>	Online	EDULA101S17
101 Basics Series: Transformers <a href="#">Enroll</a>	Online	EDULA101S13
201 Series: Eaton Switchboards <a href="#">Enroll</a>	Online	EDULD201S37
Basic Schematics and Motor Control Diagrams <a href="#">Enroll</a>	Virtual Instructor	EDUWDVBMCDT2
EESS: Arc Flash and the Importance of Electrical Safety <a href="#">Enroll</a>	Online	EDULDEESS10
EESS: Microgrid Application and Control <a href="#">Enroll</a>	Online	EDULDEESS03
EESS: Modular Integrated Transportable Substation (MITS) <a href="#">Enroll</a>	Online	EDULDEESS04
EESS: Foreseer Electrical Power Monitoring System <a href="#">Enroll</a>	Online	EDULDEESS05
EESS: Power Systems Engineering <a href="#">Enroll</a>	Online	EDULDEESS07
EESS: Switchgear Modernization <a href="#">Enroll</a>	Online	EDULDEESS02
EESS: Turnkey Solutions <a href="#">Enroll</a>	Online	EDULEEESS08
Introduction to Automation Concepts <a href="#">Enroll</a>	Virtual Instructor	EDUWDVAUTOT2
Power Defense Molded Case Circuit Breakers <a href="#">Enroll</a>	Online	EDUVAPD01
101 Basics Series: Safety Switches and Disconnects <a href="#">Enroll</a>	Online	EDULA101S16
101 Basics Series: Transfer Switches <a href="#">Enroll</a>	Online	EDULA101S15
201 Series: Low Voltage Fuses <a href="#">Enroll</a>	Online	EDULD201S39



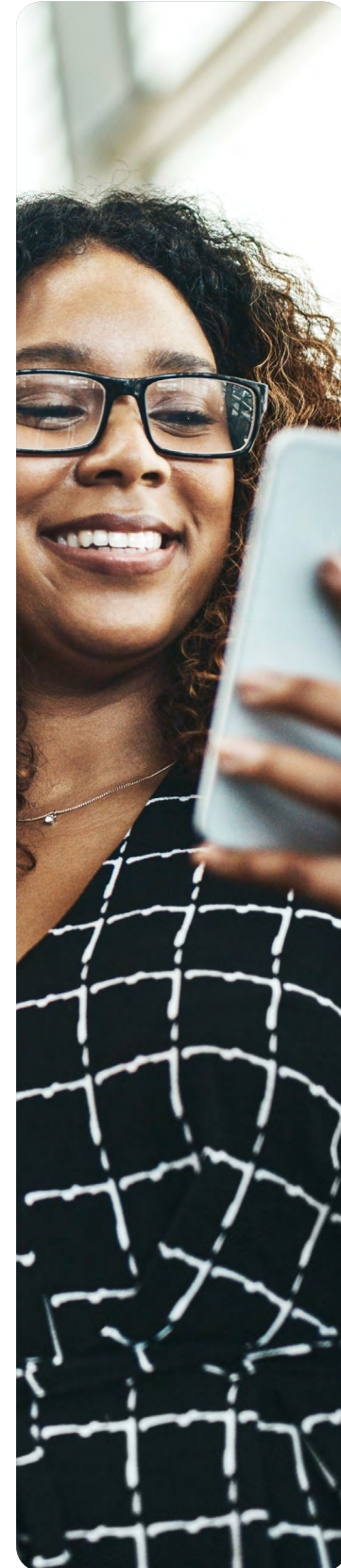
## Engineering Services and Systems Training Plan

Title and Description	Format	Course Code
<b>Phase 2</b>		
201 Series: Soft Starters <a href="#">Enroll</a>	Online	EDULD201S36
Busway Bid Manager Takeoff <a href="#">Enroll</a>	Virtual Instructor	EDUWDVBUST2
Electronic Metering, Monitoring and Communications Tier 2 <a href="#">Enroll</a>	Live Instructor	EDUEMMCT2
Enclosed Control Bid Manager Takeoff <a href="#">Enroll</a>	Virtual Instructor	EDUWDVECNT2
Industrial Communication Protocols <a href="#">Enroll</a>	Virtual Instructor	EDUWDVICPT3
Switchgear Modernization Proficiency Training <a href="#">Enroll</a>	Live Instructor	EDUDLEM3T
Busway Tier 2 <a href="#">Enroll</a>	Live Instructor	EDUDCBUST2
Industrial Control Workshop Tier 2 <a href="#">Enroll</a>	Live Instructor	EDUEIC2
Switching Devices Workshop Tier 3 <a href="#">Enroll</a>	Live Instructor	EDUDSDT3
<b>Phase 3</b>		
Variable Frequency Drives Tier 2 <a href="#">Enroll</a>	Live Instructor	EDUDIVFDT2
Busway Tier 3 Training <a href="#">Enroll</a>	Live Instructor	EDUAPBUST3
Motor Control Centers Tier 2 <a href="#">Enroll</a>	Live Instructor	EDUDPMCCT2
<b>Phase 4</b>		
Automation Tier 3 <a href="#">Enroll</a>	Live Instructor	EDUDIAUTOT3
Variable Frequency Drives Tier 3 <a href="#">Enroll</a>	Live Instructor	EDUDIVFDT3
Motor Control Centers Tier 3 <a href="#">Enroll</a>	Live Instructor	EDUDPMCCT3
Power Quality Solutions Tier 3 <a href="#">Enroll</a>	Live Instructor	EDUDQPST3



## Courses by Date

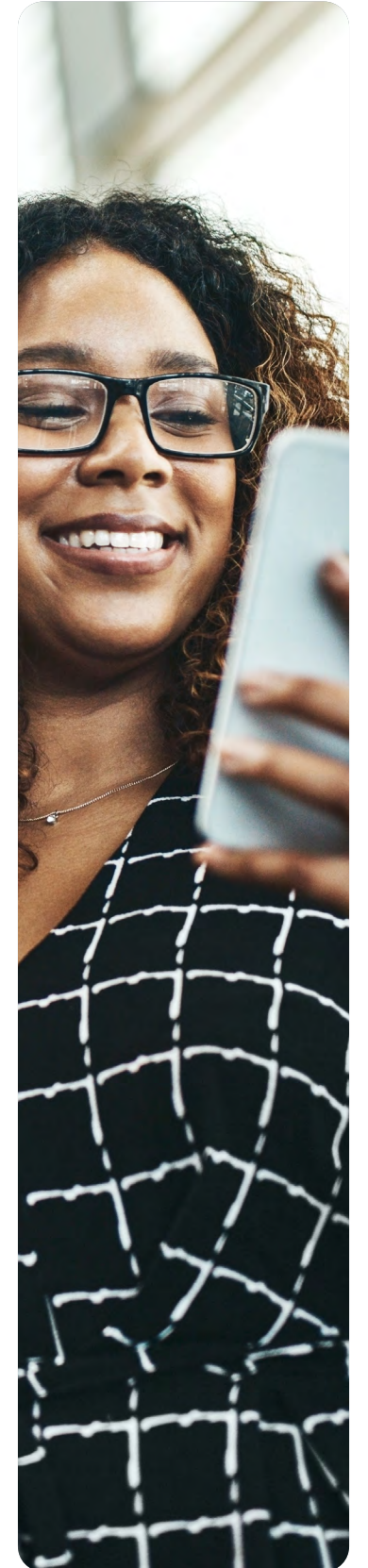
Start Date	End Date	Title and Description	Course Code	Location
<b>January</b>				
1/12/21	1/12/21	Residential Group Metering and Bid Manager Configuration Exercises <a href="#">Enroll</a>	EDUWDVRMTRT2	Virtual Instructor
1/12/21	1/12/21	Switchboard Bid Manager Takeoff <a href="#">Enroll</a>	EDUWDVSBTT2	Virtual Instructor
1/14/21	1/14/21	Arc Fault Circuit Interrupters, Loadcenters and Bid Manager Configuration Exercises <a href="#">Enroll</a>	EDUWDVRLCT2	Virtual Instructor
1/19/21	1/19/21	Bid Manager Configuration Exercises for Multi-Family Applications <a href="#">Enroll</a>	EDUWDVRBMT2	Virtual Instructor
1/20/21	1/20/21	Panelboard Bid Manager Configuration <a href="#">Enroll</a>	EDUWDVPLNT2	Virtual Instructor
<b>February</b>				
2/2/21	2/2/21	Commercial and Residential One-Line Reading <a href="#">Enroll</a>	EDUWDVCROLR	Virtual Instructor
2/3/21	2/3/21	Safety Switch Bid Manager Take Off Training <a href="#">Enroll</a>	EDUWDVSSTT2	Virtual Instructor
2/4/21	2/4/21	Residential Group Metering and Bid Manager Configuration Exercises <a href="#">Enroll</a>	EDUWDVRMTRT2	Virtual Instructor
2/9/21	2/9/21	Basic Schematics and Motor Control Diagrams <a href="#">Enroll</a>	EDUWDVBMCDT2	Virtual Instructor
2/10/21	2/10/21	Arc Fault Circuit Interrupters, Loadcenters and Bid Manager Configuration Exercises <a href="#">Enroll</a>	EDUWDVRLCT2	Virtual Instructor
2/11/21	2/11/21	Dry-Type Distribution Transformer (DTDT) Bidmanager Take Off Training <a href="#">Enroll</a>	EDUWDVDTXT2	Virtual Instructor
2/16/21	2/16/21	Bid Manager Configuration Exercises for Multi-Family Applications <a href="#">Enroll</a>	EDUWDVRBMT2	Virtual Instructor
2/18/21	2/18/21	Electronic Metering Monitoring and Communications Tier 2 <a href="#">Enroll</a>	EDUWDVEMMCT2	Virtual Instructor
2/25/2021	2/25/2021	Introduction to Automation Concepts <a href="#">Enroll</a>	EDUWDVAUTOT2	Virtual Instructor
<b>March</b>				
3/10/2021	3/10/2021	Commercial and Residential One-Line Reading <a href="#">Enroll</a>	EDUWDVCROLR	Virtual Instructor
3/16/2021	3/16/2021	Enclosed Control Bid Manager Takeoff <a href="#">Enroll</a>	EDUWDVECNT2	Virtual Instructor
3/18/2021	3/18/2021	Switchgear One-Line Reading <a href="#">Enroll</a>	EDUWDVBSWGRDT2	Virtual Instructor
3/31/2021	3/31/2021	Communicating Panelboards and Switchboards Tier 3 <a href="#">Enroll</a>	EDUWDVPST3	Virtual Instructor
<b>April</b>				
4/6/2021	4/6/2021	Safety Switch Bidmanager Take Off <a href="#">Enroll</a>	EDUWDVSSTT2	Virtual Instructor
4/13/2021	4/13/2021	Residential Group Metering and Bid Manager Configuration Exercises <a href="#">Enroll</a>	EDUWDVRMTRT2	Virtual Instructor



Click [here](#) for this appendix in Excel format to be sorted by date, course, or location to best suit your planning needs.

## Courses by Date

Start Date	End Date	Title and Description	Course Code	Location
<b>April Continued</b>				
4/14/2021	4/14/2021	Dry-Type Distribution Transformer (DTDT) Bidmanager Take Off Training <a href="#">Enroll</a>	EDUWDVDTXT2	Virtual Instructor
4/15/2021	4/15/2021	Arc Fault Circuit Interrupters, Loadcenters and Bid Manager Configuration Exercises <a href="#">Enroll</a>	EDUWDVRLCT2	Virtual Instructor
4/20/2021	4/20/2021	Virtual Distributor Focused Workshop: Residential Tier 2 <a href="#">Enroll</a>	EDUWDVFWR	Virtual Instructor
4/21/2021	4/21/2021	Virtual Distributor Focused Workshop: Construction Tier 2 <a href="#">Enroll</a>	EDUWDVFWC	Virtual Instructor
4/22/2021	4/22/2021	Virtual Distributor Focused Workshop: Industrial Control Tier 2 <a href="#">Enroll</a>	EDUWDVFWI	Virtual Instructor
4/27/2021	4/27/2021	Switchboard Bid Manager Takeoff <a href="#">Enroll</a>	EDUWDVSBTT2	Virtual Instructor
4/29/2021	4/29/2021	Virtual Motor Control Centers Tier 2 <a href="#">Enroll</a>	EDUWDVMCT2	Virtual Instructor
<b>May</b>				
5/4/2021	5/5/2021	Virtual Industrial Control Workshop Tier 2 <a href="#">Enroll</a>	EDUWDVICT2	Virtual Instructor
5/6/2021	5/6/2021	Panelboard Bid Manager Configuration <a href="#">Enroll</a>	EDUWDVPLNT2	Virtual Instructor
5/11/2021	5/11/2021	Commercial and Residential One-Line Reading <a href="#">Enroll</a>	EDUWDVCROLR	Virtual Instructor
5/12/2021	5/12/2021	Communicating Panelboards and Switchboards T3 <a href="#">Enroll</a>	EDUWDVPST3	Virtual Instructor
5/13/2021	5/13/2021	Bid Manager Configuration Exercises for Multi-Family Applications <a href="#">Enroll</a>	EDUWDVRBMT2	Virtual Instructor
5/25/2021	5/25/2021	Electronic Metering, Monitoring and Communications Tier 2 <a href="#">Enroll</a>	EDUWDVEMMCT2	Virtual Instructor
<b>June</b>				
6/2/2021	6/2/2021	Busway BidManager Configuration Tier 2 <a href="#">Enroll</a>	EDUWDVBUST2	Virtual Instructor
6/7/2021	6/7/2021	Virtual Distributor Focused Workshop: Residential Tier 2 <a href="#">Enroll</a>	EDUWDVFWR	Virtual Instructor
6/9/2021	6/9/2021	Virtual Distributor Focused Workshop: Construction Tier 2 <a href="#">Enroll</a>	EDUWDVFWC	Virtual Instructor
6/11/2021	6/11/2021	Virtual Distributor Focused Workshop: Industrial Control Tier 2 <a href="#">Enroll</a>	EDUWDVFWI	Virtual Instructor
6/14/2021	6/14/2021	Virtual Light Commercial and Residential Project Configuration <a href="#">Enroll</a>	EDUWDVCRPCT3	Virtual Instructor
6/16/2021	6/16/2021	Switchgear One-Line Reading <a href="#">Enroll</a>	EDUWDVBSWGRDT2	Virtual Instructor
6/22/2021	6/22/2021	Safety Switch BidManager Take Off Tier 3 <a href="#">Enroll</a>	EDUWDVSSTT3	Virtual Instructor
6/24/2021	6/25/2021	Virtual Industrial Control Workshop Tier 2 <a href="#">Enroll</a>	EDUWDVICT2	Virtual Instructor
6/30/2021	6/30/2021	Busway 2 BidManager Take Off Session 2 Tier 2	EDUWDVBUST2T2	Virtual Instructor

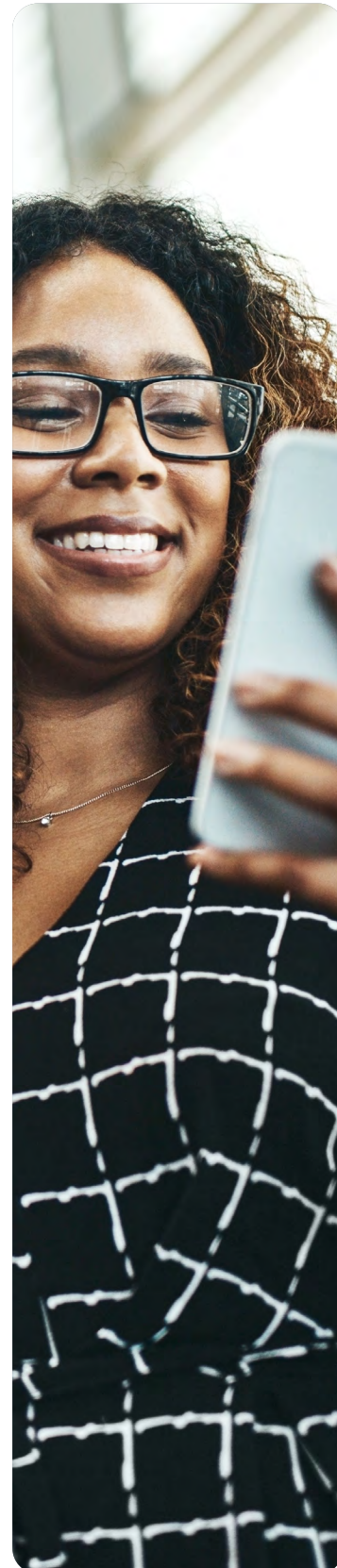


Click [here](#) for this appendix in Excel format to be sorted by date, course, or location to best suit your planning needs.



## Courses by Date

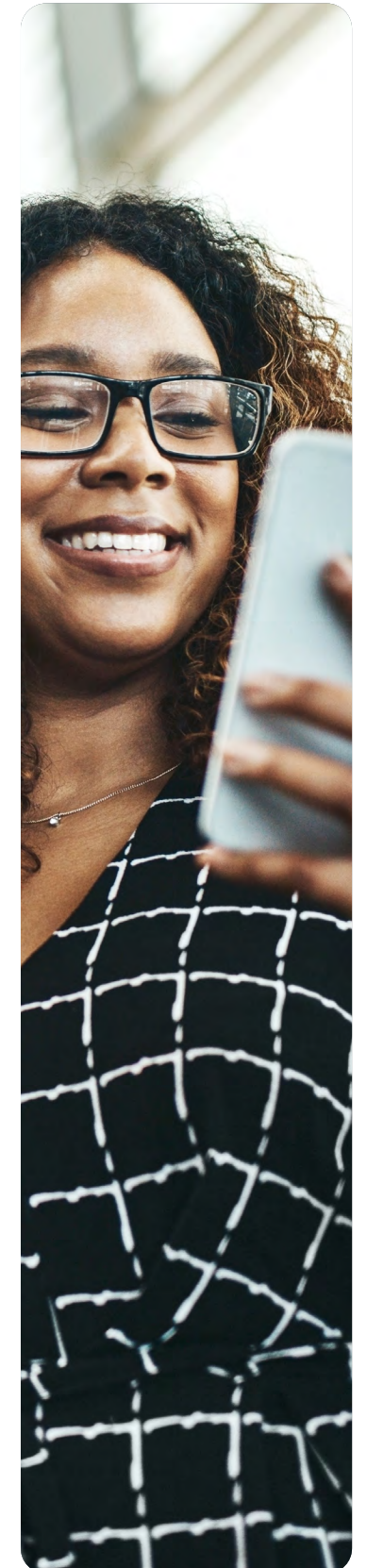
Start Date	End Date	Title and Description	Course Code	Location
<b>July</b>				
7/14/2021	7/15/2021	Busway Tier 3 Training <a href="#">Enroll</a>	EDUAPBUST3	Chicago, IL
7/20/2021	7/21/2021	Light Commercial and Residential Project Configuration <a href="#">Enroll</a>	EDUDCRPCT3	Indianapolis, IN
7/20/2021	7/21/2021	Variable Frequency Drives Tier 2 <a href="#">Enroll</a>	EDUDIVFDT2	Portland, OR
7/21/2021	7/21/2021	Automatic Transfer Switches Tier 2 <a href="#">Enroll</a>	EDUDATST2	Asheville, NC
7/27/2021	7/27/2021	Advanced Schematics and Motor Control Diagrams Training <a href="#">Enroll</a>	EDUWDVAMCDT3	Virtual Instructor
7/27/2021	7/28/2021	Light Commercial and Residential Project Configuration <a href="#">Enroll</a>	EDUDCRPCT3	Asheville, NC
<b>August</b>				
8/3/2021	8/4/2021	Motor Control Centers Tier 2 <a href="#">Enroll</a>	EDUDPMCCT2	El Paso, TX
8/11/2021	8/11/2021	Power Defense Circuit Breakers <a href="#">Enroll</a>	EDUWDVPDCBT2	Virtual Instructor
8/17/2021	8/17/2021	Industrial Communication Protocols <a href="#">Enroll</a>	EDUWDVICPT3	Virtual Instructor
8/17/2021	8/19/2021	Commercial Construction Workshop Tier 3 <a href="#">Enroll</a>	EDUDCCCWT3	Chicago, IL
8/24/2021	8/24/2021	Distributor Focused Workshop - Residential Products <a href="#">Enroll</a>	EDUDFWR	Denver, CO
8/25/2021	8/25/2021	Distributor Focused Workshop - Construction Products <a href="#">Enroll</a>	EDUDFWC	Denver, CO
8/26/2021	8/26/2021	Distributor Focused Workshop - Industrial Products <a href="#">Enroll</a>	EDUDFWI	Denver, CO
<b>September</b>				
9/14/2021	9/15/2021	Automation Tier 3 <a href="#">Enroll</a>	EDUDIAUTOT3	Portland, OR
9/15/2021	9/16/2021	Busway Tier 2 <a href="#">Enroll</a>	EDUDCBUST2	Greenwood, SC
9/21/2021	9/21/2021	Distributor Focused Workshop - Residential Products <a href="#">Enroll</a>	EDUDFWR	Mountainside, NJ
9/22/2021	9/22/2021	Distributor Focused Workshop - Construction Products <a href="#">Enroll</a>	EDUDFWC	Mountainside, NJ
9/23/2021	9/23/2021	Distributor Focused Workshop - Industrial Products <a href="#">Enroll</a>	EDUDFWI	Mountainside, NJ
9/28/2021	9/29/2021	Power Quality Solutions Tier 3 <a href="#">Enroll</a>	EDUDQPST3	Warrendale, PA
9/28/2021	9/28/2021	Automatic Transfer Switch Bid Manager Take off <a href="#">Enroll</a>	EDUWDVATST2	Virtual Instructor



Click [here](#) for this appendix in Excel format to be sorted by date, course, or location to best suit your planning needs.

## Courses by Date

Start Date	End Date	Title and Description	Course Code	Location
<b>October</b>				
10/5/2021	10/5/2021	Distributor Focused Workshop - Residential Products <a href="#">Enroll</a>	EDUDFWR	Milwaukee, WI
10/6/2021	10/6/2021	Distributor Focused Workshop - Construction Products <a href="#">Enroll</a>	EDUDFWC	Milwaukee, WI
10/7/2021	10/7/2021	Distributor Focused Workshop - Industrial Products <a href="#">Enroll</a>	EDUDFWI	Milwaukee, WI
10/12/2013	10/13/2021	Electronic Metering Monitoring and Communications <a href="#">Enroll</a>	EDUDEMCT2	Austin, TX
10/12/2021	10/12/2021	Distributor Focused Workshop - Residential Products <a href="#">Enroll</a>	EDUDFWR	Nashville, TN
10/13/2021	10/13/2021	Distributor Focused Workshop - Construction Products <a href="#">Enroll</a>	EDUDFWC	Nashville, TN
10/14/2021	10/14/2021	Distributor Focused Workshop - Industrial Products <a href="#">Enroll</a>	EDUDFWI	Nashville, TN
10/19/2021	10/20/2021	Variable Frequency Drives Tier 3 <a href="#">Enroll</a>	EDUDIVFDT3	Watertown, WI
10/26/2021	10/27/2021	Motor Control Centers Tier 3 <a href="#">Enroll</a>	EDUDPMCCT3	Fayetteville, NC
10/26/2021	10/28/2021	Switchgear Modernization Proficiency Training <a href="#">Enroll</a>	EDUDLEM3T	Warrendale, PA
<b>November</b>				
11/2/2021	11/3/2021	Light Commercial and Residential Project Configuration <a href="#">Enroll</a>	EDUDCRPCT3	San Diego, CA
11/9/2021	11/10/2021	Variable Frequency Drives Tier 2 <a href="#">Enroll</a>	EDUDIVFDT2	Atlanta, GA
11/9/2021	11/10/2021	Light Commercial and Residential Project Configuration <a href="#">Enroll</a>	EDUDCRPCT3	Austin, TX
11/9/2021	11/9/2021	Switchboards Tier 2 <a href="#">Enroll</a>	EDUDSADT2	Phoenix, AZ
11/10/2021	11/10/2021	Switchgear for Distributors <a href="#">Enroll</a>	EDUDSWGRT2	Phoenix, AZ
11/16/2021	11/16/2021	Switchboard Bid Manager Takeoff <a href="#">Enroll</a>	EDUWDVSBTT2	Virtual Instructor
11/30/2021	12/2/2021	Commercial Construction Workshop Tier 3 <a href="#">Enroll</a>	EDUDCCCWT3	Portland, OR
<b>December</b>				
12/15/2021	12/15/2021	Switchgear One-Line Reading <a href="#">Enroll</a>	EDUWDVBSWGRDT2	Virtual Instructor



Click [here](#) for this appendix in Excel format to be sorted by date, course, or location to best suit your planning needs.



*Powering Business Worldwide*

**Eaton**  
1000 Eaton Boulevard  
Cleveland, OH 44122  
United States  
Eaton.com

© 2020 Eaton  
All Rights Reserved  
Printed in USA  
Publication No. TR02802004E / Z18832

Eaton is a registered trademark.

All other trademarks are property  
of their respective owners.